

ÜBERSICHTSZEICHNUNG

ASSEMBLY DRAWING

GHOST

LECTOR FS SF ESSENTIAL



LECTOR FS SF UNIVERSAL



LECTOR FS SF ADVANCED



LECTOR FS SF PRO



LECTOR FS SF WORLD CUP

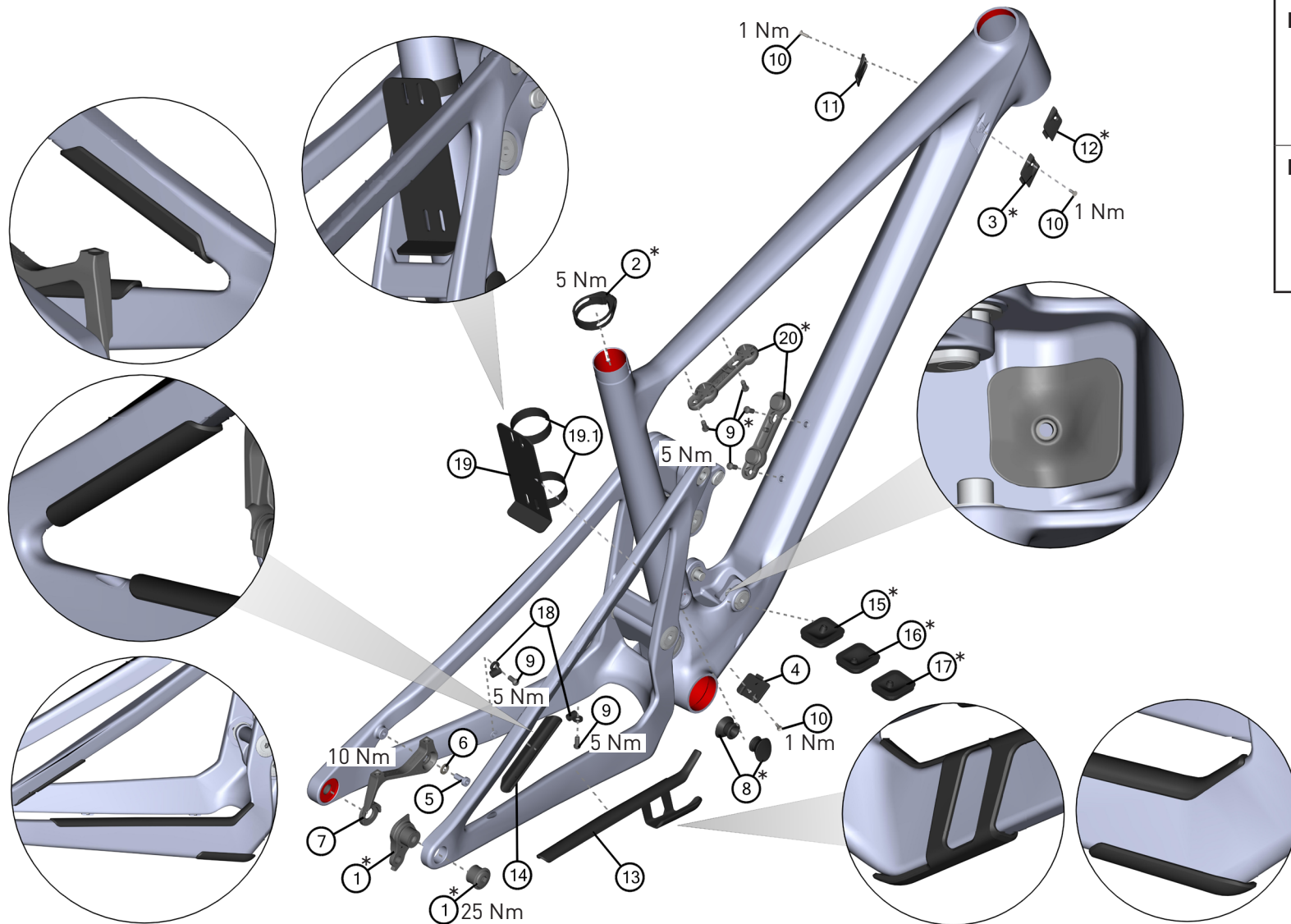


LECTOR FS SF (MY23)

ÜBERSICHTSZEICHNUNG

ASSEMBLY DRAWING main frame

GHOST



Hinweis: Bei den Schrauben muss mittelfeste Gewindegewissicherung verwendet werden. Rote Flächen müssen gefettet werden.

Note: use medium strength screw lock for screw threads. red surfaces has to be greased.

ÜBERSICHTSZEICHNUNG

ASSEMBLY DRAWING main frame

GHOST

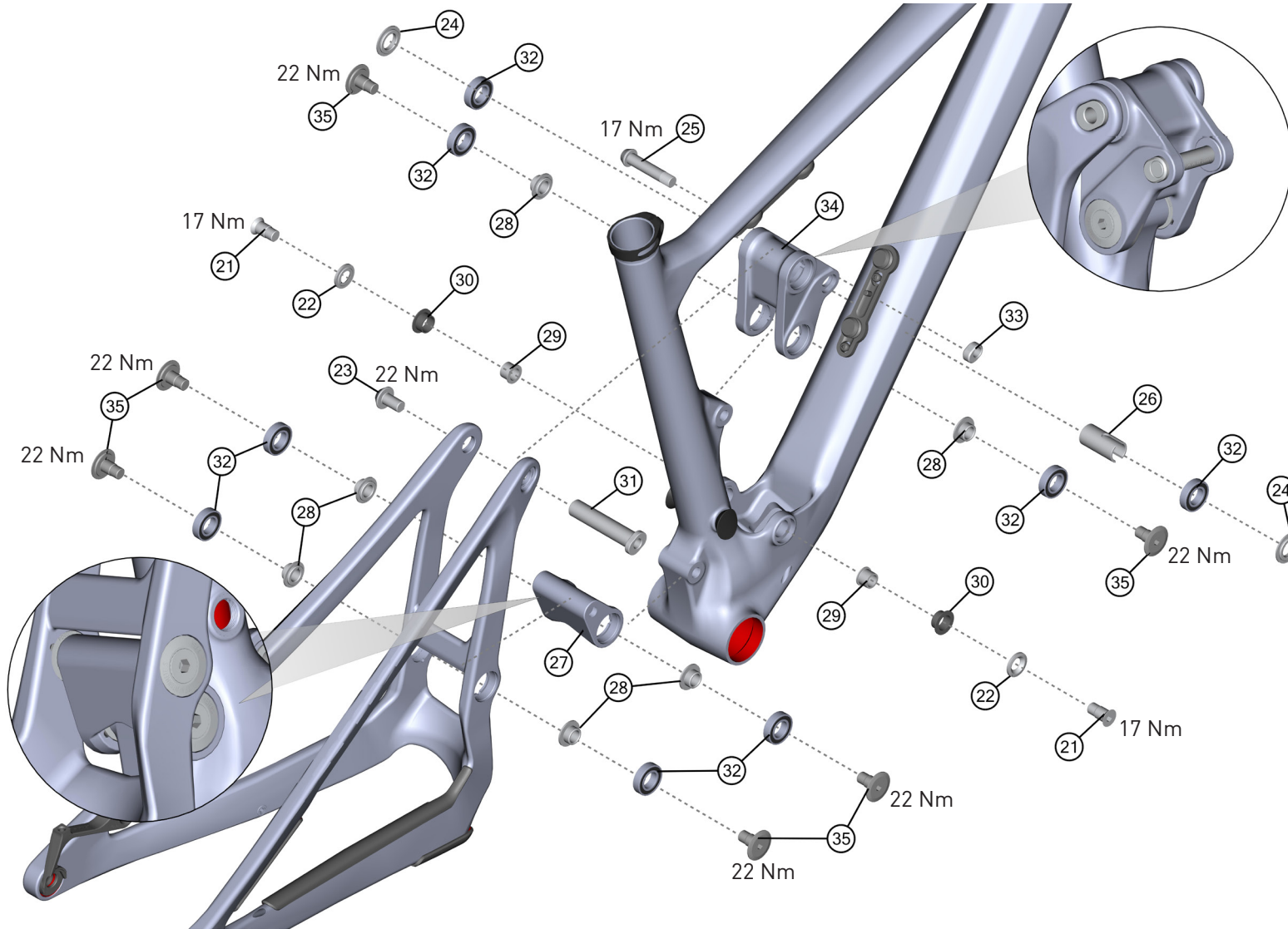
BOM-ID	Description	Specification	Torque	Item no.	QTY
1*	Hanger nut		25 Nm	FRHG0061	1
1*	Hanger			FRHG0061	1
2*	GW Seatclamp (without EightPins)	Style A 38,0 mm black	5 Nm	SC0009	1
3*	Cable routing HT - right side (2 cable)			FROT0192	1
4	Cable routing BB (2 cable)			FROT0197	1
5	Hexagon socket screw	Hex 4 - M6 x 14 mm	10 Nm	SM1693	1
6	Washer	ø 6,4 mm		SM1243	1
7	Disconnect brakemount PM 180mm			FROT0202	1
8*	PP Rubber Plug, left side without thread into frame (without EightPins)			FROT0173	1
8*	PP Rubber Plug, right side with thread into frame (without EightPins)			FROT0226	1
9*	Lens head screw, Framesize XS	TX25 - M5 x 12 mm	5 Nm	SM0919	4
9*	Lens head screw, Framesize S - XL	TX25 - M5 x 12 mm	5 Nm	SM0919	6
10	Counter sunk screw	TX10 - M3 x 10 mm	1 Nm	SM1524	3
11	Cable routing HT - left side (2 cable)			FROT0195	1
12*	Cable routing HT - right side (1 cable)			FROT0193	1
13	Protector chain stay			FRPR0067	1
14	Protector seat stay			FRPR0068	1
15*	Cable guide - shock DT Swiss			FROT0201	1
16*	Cable guide - shock Rock Shox			FROT0200	1
17*	Cable guide - shock Fox			FROT0199	1
18	Cable guide			SM0002	2
19	VPP fender rear triangle			FER0029	1
19.1	Klett-Kabelband	330 x 20 mm		PM0025	2
20*	FIDLOCK TWIST bike base, Framesize XS			FROT0203	1
20*	FIDLOCK TWIST bike base, Framesize S - XL			FROT0203	2

ÜBERSICHTSZEICHNUNG

ASSEMBLY DRAWING

rocker

GHOST



Hinweis: Bei den Schrauben muss mittelfeste Gewindegewissicherung verwendet werden.
Rote Flächen müssen gefettet werden.

Note: use medium strength screw lock for screw threads.
red surfaces has to be greased.

ÜBERSICHTSZEICHNUNG

ASSEMBLY DRAWING rocker

GHOST

BOM-ID	Description	Specification	Torque	Item no.	QTY
21	Flat head screw (for shock)	Hex 6 - M10 x 21,7 mm	17 Nm	FRSC0105	2
22	Cap for trunnion mount	∅ 11 x ∅ 22 x 3 mm		FRWS0046	2
23	Rocker mount screw	Hex 6 - M10 x 17 mm	22 Nm	FRSC0159	1
24	Spacer for rocker mount	∅ 15 x ∅ 22 x 4,8 mm		FRWS0041	2
25	Shock mount screw	Hex 6 - M10 x 49 mm	17 Nm	FRSC0103	1
26	Sleeve for rocker	∅ 15,2 x ∅ 19 x 37,6 mm		FRSP0003	1
27	VPP link			FRSC0108	1
28	Spacer for bearing seat	∅ 11 x ∅ 15 x 10 mm		FRSP0001	6
29	Sleeve for trunnion mount	∅ 11 x ∅ 14 x 10,5 mm		FRSP0004	2
30	Bushing for trunnion mount	∅ 14 x ∅ 16 x 8 mm		FROT0190	2
31	Axle Rocker mount	M10 - ∅ 15 x 74,5 mm		FRAX0009	1
32	Bearing 61902	∅ 15 x ∅ 28 x 7 mm		FRBR0001	8
33	Nut for shock mount	M10		FRNT0053	1
34	Rocker			FRRO0003	1
35	Flat head screw incl. cap Not to be used for mounting the shock!	Hex 6 - M10 x 21,7 mm	22 Nm	FRSC0024	6

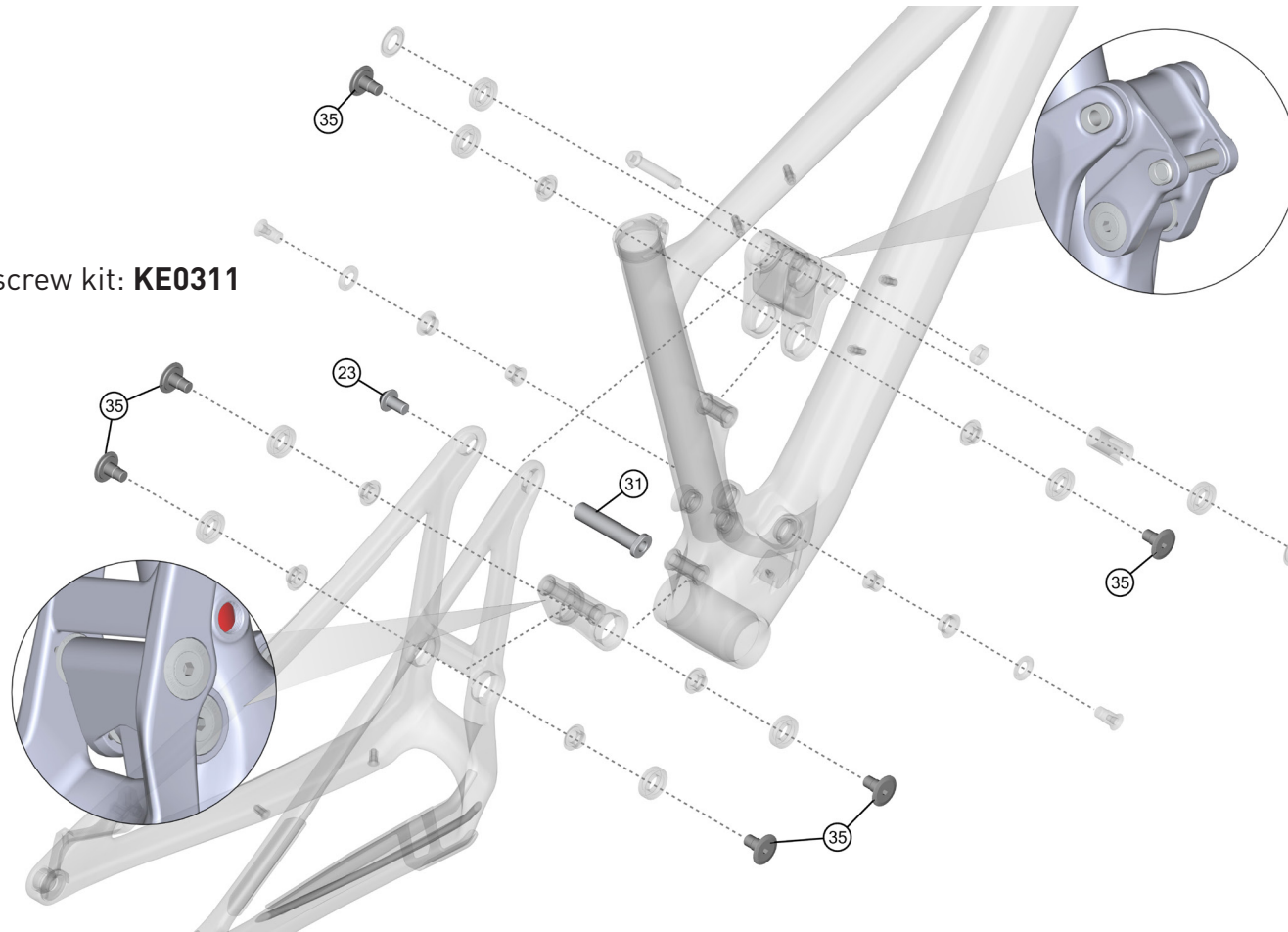
ÜBERSICHTSZEICHNUNG

ASSEMBLY DRAWING axle & screw kit

GHOST

BOM-ID	Description	Specification	Torque	Item no.	QTY
	Axle an screw Kit			KE0311	1
23	Rocker mount screw	Hex 6 - M10 x 17 mm	22 Nm	FRSC0159	1
31	Axle Rocker mount	M10 - Ø 15 x 74,5 mm		FRAX0009	1
35	Flat head screw incl. cap	Hex 6 - M10 x 21,7 mm	22 Nm	FRSC0024	6

Item no. axle and screw kit: **KE0311**



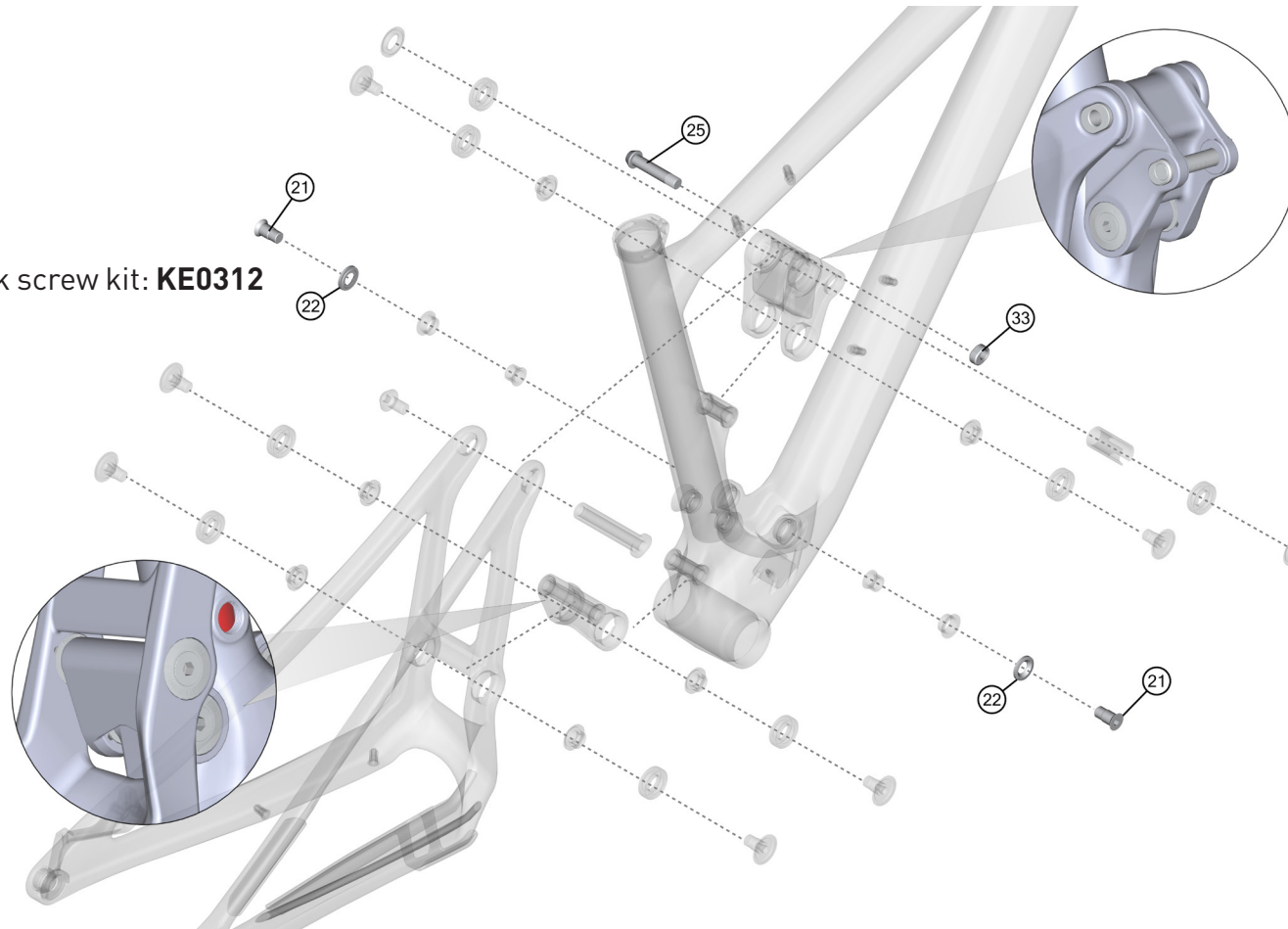
ÜBERSICHTSZEICHNUNG

ASSEMBLY DRAWING rear shock screw kit

GHOST

BOM-ID	Description	Specification	Torque	Item no.	QTY
	Rear shock screw Kit			KE0312	1
21	Flat head screw	Hex 6 - M10 x 21,7 mm	17 Nm	FRSC0105	2
22	Cap for trunnion mount	∅ 11 x ∅ 22 x 3 mm		FRWS0046	2
25	Shock mount screw	Hex 6 - M10 x 49 mm	17 Nm	FRSC0103	1
33	Nut for shock mount	M10		FRNT0053	1

Item no. rear shock screw kit: **KE0312**



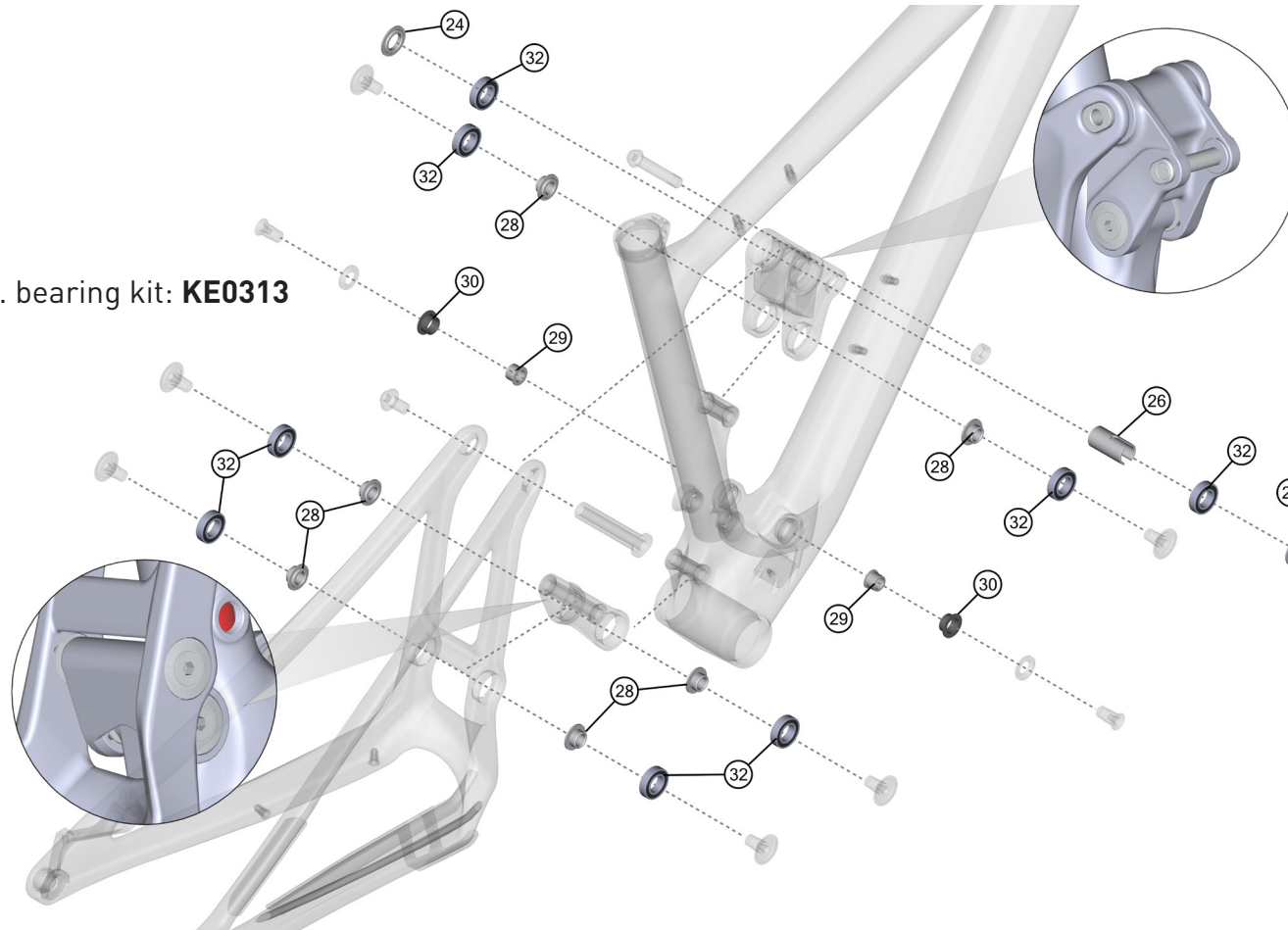
ÜBERSICHTSZEICHNUNG

ASSEMBLY DRAWING bearing kit

GHOST

BOM-ID	Description	Specification	Torque	Item no.	QTY
	Bearing Kit			KE0313	1
24	Spacer for rocker mount	∅ 15 x ∅ 22 x 4,8 mm		FRWS0041	2
26	Sleeve for rocker	∅ 15,2 x ∅ 19 x 37,6 mm		FRSP0003	1
28	Spacer for bearing seat	∅ 11 x ∅ 15 x 10 mm		FRSP0001	6
29	Sleeve for trunnion mount	∅11 x ∅ 14 x 10,5 mm		FRSP0004	2
30	Bushing for trunnion mount	∅ 14 x ∅ 16 x 8 mm		FROT0190	2
32	Bearing 61902	∅15 x ∅ 28 x 7 mm		FRBR0001	8

Item no. bearing kit: **KE0313**



ÜBERSICHTSZEICHNUNG

ASSEMBLY DRAWING

GHOST

FACT SHEET:	
SHOCK LENGTH:	165 MM
SHOCK HARDWARE TOP:	30x10
SHOCK HARDWARE BOTTOM:	54xTR
HEADSET TOP:	ZS 44
HEADSET BOTTOM:	ZS 56
SEATPOST DIAMETER:	34,9 MM
CLAMP INNER DIAMETER:	38,0 MM
BOTTOM BRACKET:	Pressfit 92 / DUB
KICKSTAND:	-----
ISCG STANDARD:	-----
CARRIER MOUNT:	-----
FENDER COMPATIBLE:	-----

DROPPER SEATPOST READY:	Yes
WATERBOTTLE MOUNT:	Size XS / S: 1 x 0,5 L + 1 x 0,75 L Size M / L / XL: 2 x 0,75 L
MAXIMUM PERMISSIBLE TOTAL WEIGHT:	120 KG
MAXIMUM TIRE SIZE:	29" x 2.35"
WHEEL SIZE:	29"
QUICK RELEASE LENGTH:	169 MM
OVER-LOCKNUT DIMENSION (O.L.D.):	148 MM
FD CLAMP SIZE:	-----
FD TYPE:	-----
ENGINE:	-----
BATTERY:	-----
DISPLAY:	-----